



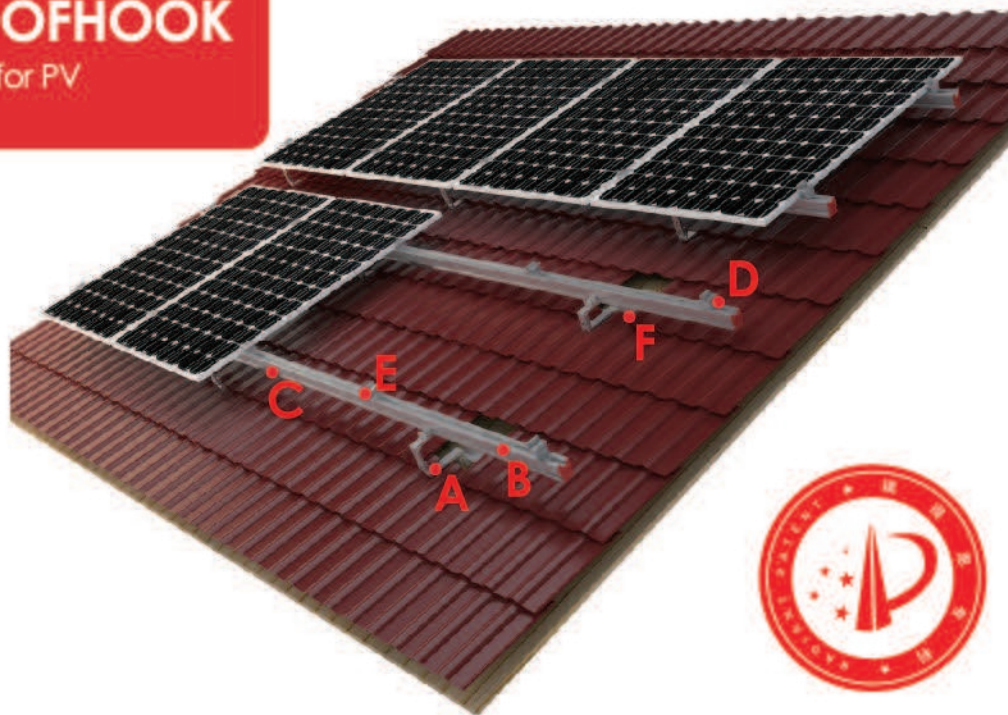
Reliable Energy Solutions

ALUMINIUM ROOFHOOK

Rooftop mounting system for PV Modules/Laminates

Our adjustable Aluminium Roofhook has been developed as a universal system for Rooftop mount system. The use of patented aluminium base rails, Click-in clamp and base rail pre-clamp technology eliminates customer cutting and enables particularly fast installation.

- Flexible rooftop mount system
- Significant savings
- Compatible with most modules
- Static reliability
- Maximum service life



Aluminium Roofhook A	Base Rail 34X34-40X40-40X60 B	Base Rail 40/56-40/60 Splice C	End /Middle Clamp Kit D/E	Wood screw F
Material:AL6005-T5 & SUS304	Material:AL6005-T5	Material:AL6005-T5& SUS304	Material:AL6005-T5& SUS304	Material:Q235(Surface Dacromet)
				

Technical Datasheet :



Application	Pitch roof
Wind load	up to 42m/s
Snow load	1.4KN/m²
PV modules	Framed, unframed
Module layout	according to requirements
Module orientation	landscape, portrait
Module inclination	0° - 45°
Building height	Up to 20m
Distance between roof fixing points	Up to 2m
Standards	JIS 8955:2011/DIN1055/ASCE_7-05/AS/NZS1170
Color	Natural
Warranty	10 years

Add: No. 636 Zixu Road, Xukou Town, Suzhou, China 215101 Tel: 86-512-66572916
 Fax: 86-512-66572756 E-mail: sales@radiantpv.com www.radiantpv.com